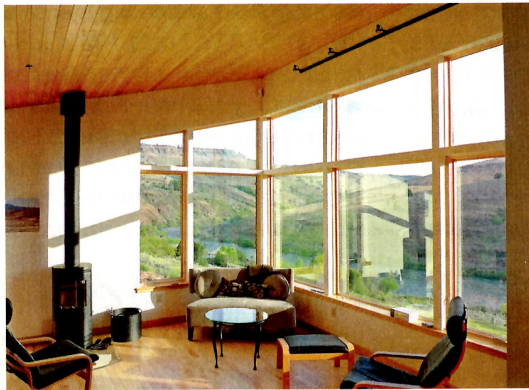




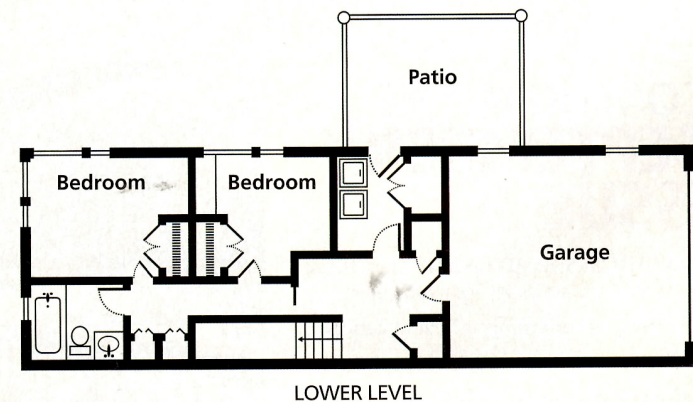
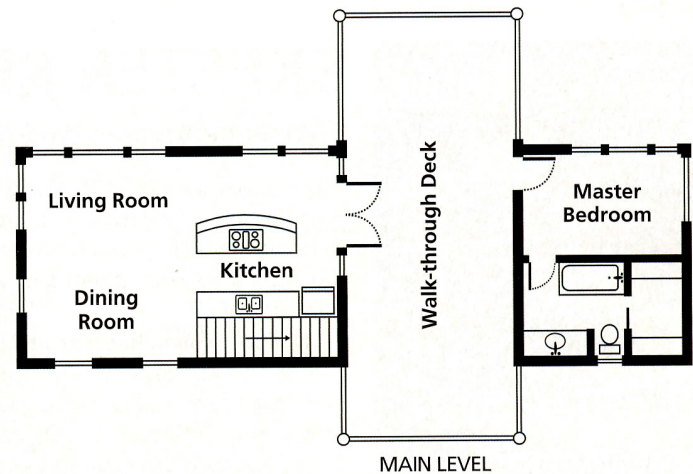
Fishing Cottage, Deschutes River

This simple, yet elegant, residential retreat on the Deschutes River near Maupin, Ore., is designed around a large central deck overlooking the river. Used for relaxation and entertainment, the deck is partially covered to function as an outdoor room. A large barn door can close off the deck for additional privacy, protection from the westerly winds and security. The deck space also separates the master suite from the great room for an enhanced sense of privacy and intimacy.

By keeping square footage at a minimum and construction straightforward, the simple, cost-effective design met the client's tight budget constraints without compromising features. The shed roof design increases the sense of height of the interior space on the upper level, opening up dramatic easterly views toward the river and hills beyond. The great room combines the kitchen, dining and living room into an open, flexible floor plan. Two guest rooms, a guest bathroom, utility room, mudroom and garage efficiently occupy the lower level of the structure. **CL**



Photos courtesy Nathan Good



plan features

Dimensions (wxd): 20x62 ft.

Bedrooms: 3 | **Baths:** 2

Total square feet: 2,103

Foundation: slab on grade

Design, plans and renderings:

This is a Central Oregon riverside fishing cabin designed by Nathan Good Architects.

For more info: nathangoodarchitects.com